

Scores in Midterm 2

After reviewing the scores, I have decided to apply the following adjustment to the scores in midterm 2:

New Score = $30 + 0.7 \times (\text{Old Score})$

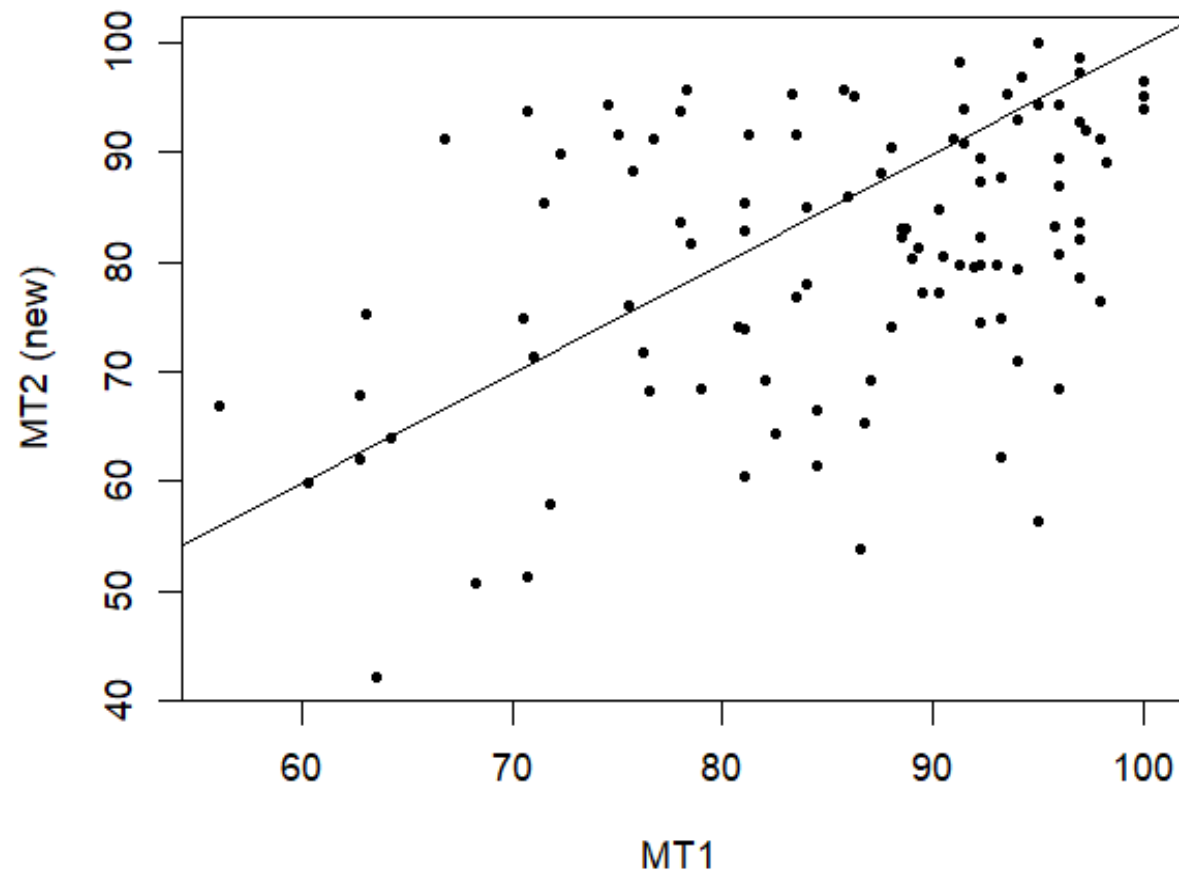
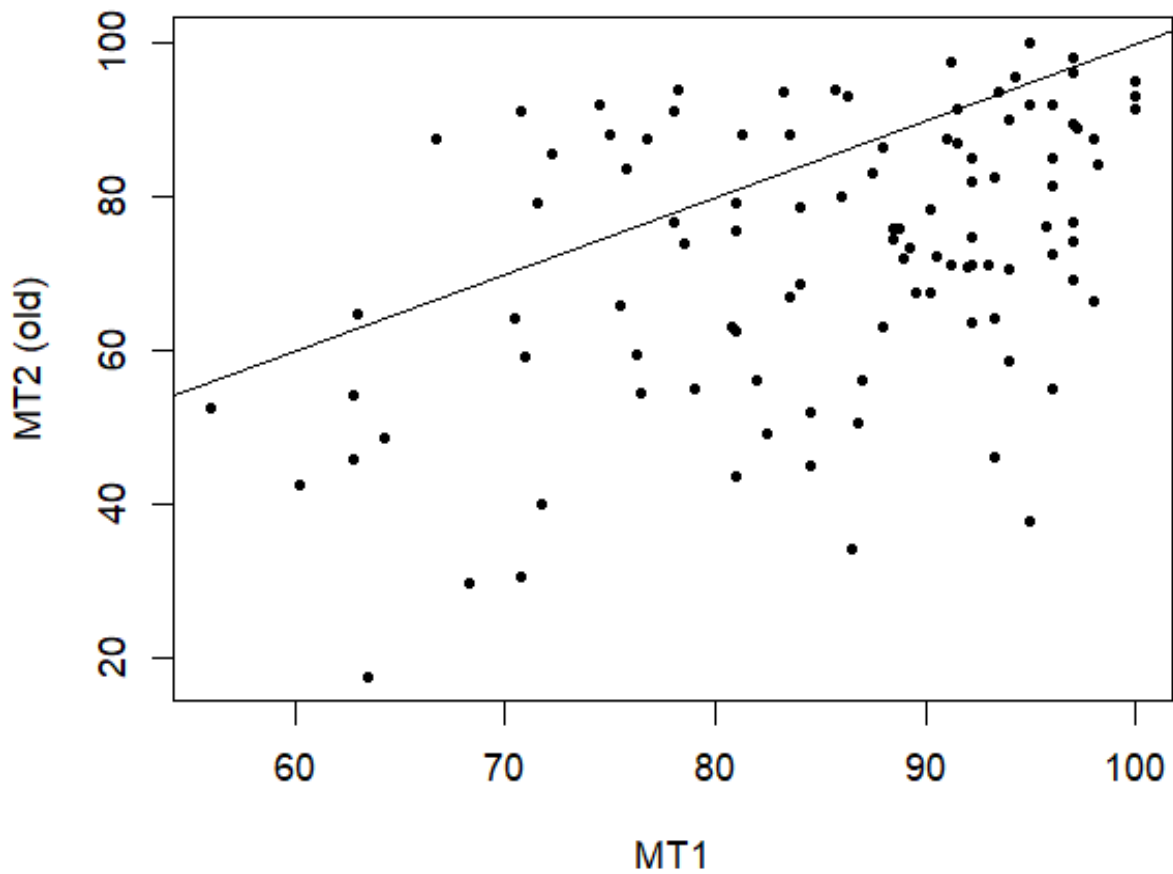
See table on right

| Old Score | New Score |
|-----------|-----------|
| 20 | 44 |
| 40 | 58 |
| 60 | 72 |
| 80 | 86 |
| 100 | 100 |

Effect on Overall Scores

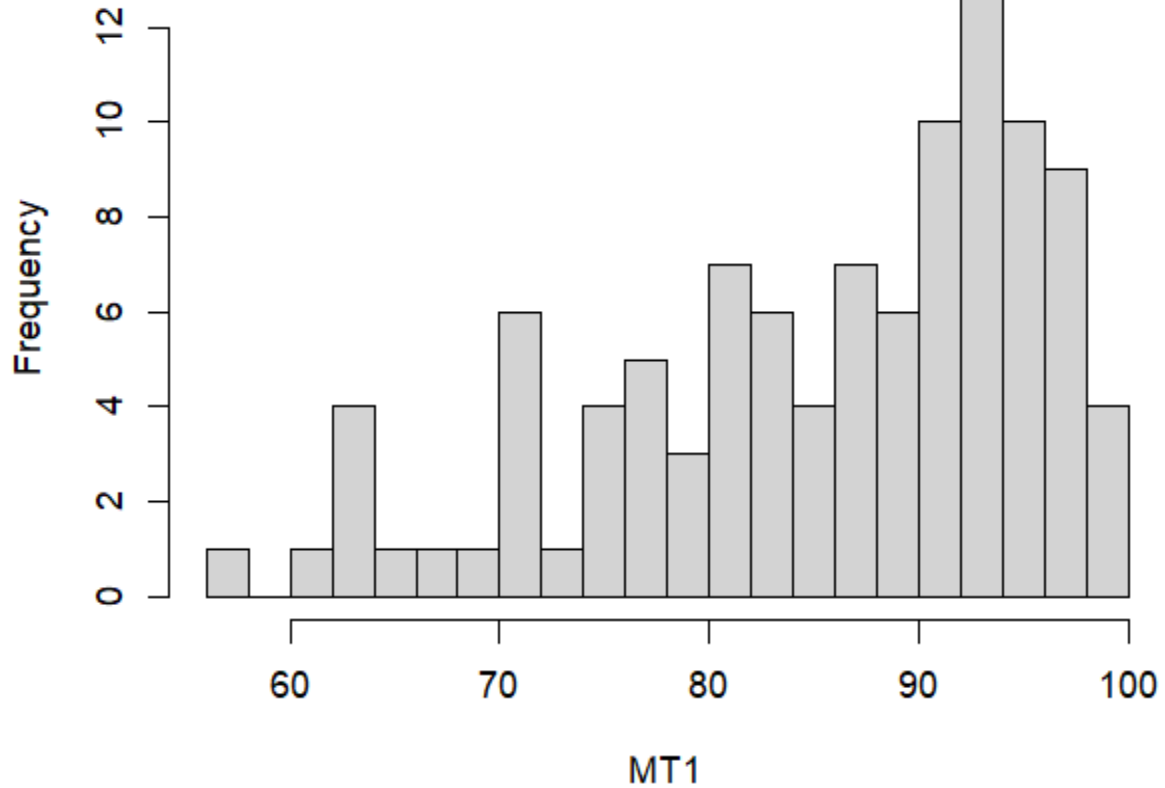
| | MT1 | MT2 (Old Score) | MT2 (New Score) |
|--------|------|-----------------|-----------------|
| Mean | 85.5 | 72.5 | 80.7 |
| Median | 88.2 | 74.6 | 82.2 |
| SD | 10.5 | 17.9 | 12.5 |
| IQR | 15.2 | 24.6 | 17.2 |

Scatterplot of MT1 v. MT2

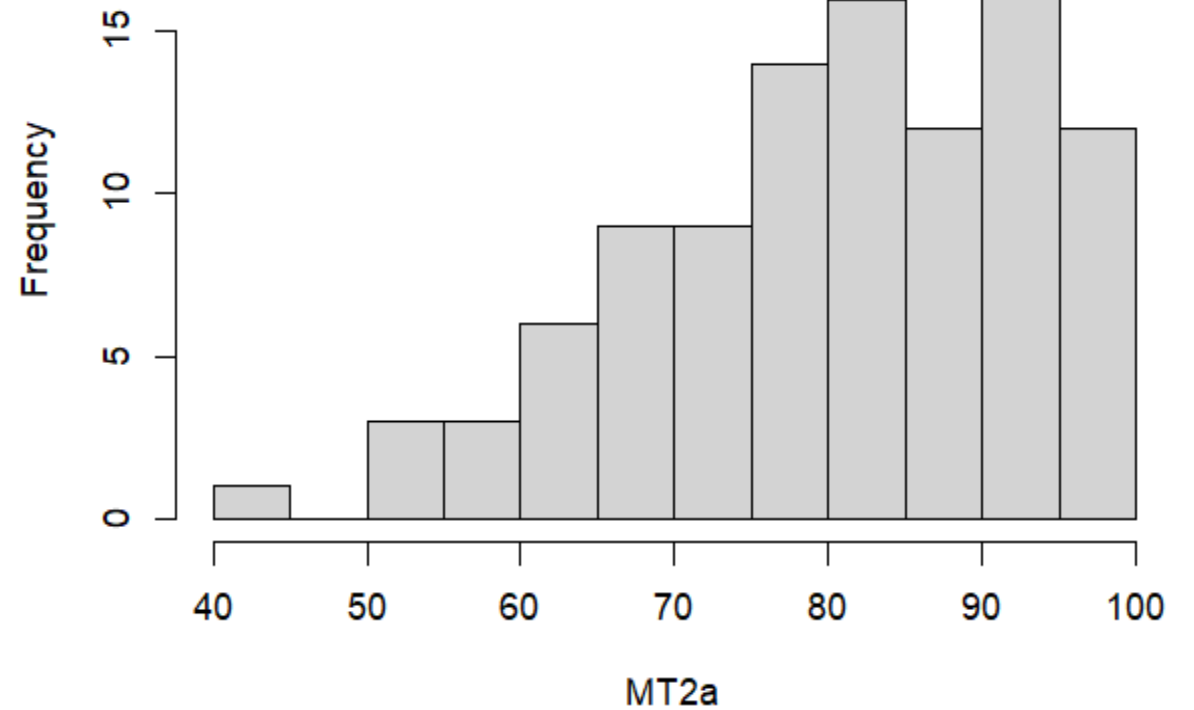


Histograms of Individual Scores

Histogram of MT1



Histogram of MT2 (New)



Overall Scores Up To MT2

Overall score, calculated as

(a) MT1, out of 100

(b) MT2, out of 100

(c) HW, defined as mean of best 6 or 8 homework scores, out of 100

(d) $(0.22*MT1+0.23*MT2+0.1*HW)/0.55$

| Measure | Result |
|-------------------|--------|
| Mean | 85.43 |
| Median | 86.95 |
| SD | 8.49 |
| IQR | 9.75 |
| Percent ≥ 90 | 30 |
| Percent ≥ 80 | 76 |
| Percent ≥ 70 | 93 |
| Percent ≥ 65 | 98 |

How you can check your grades

- Look up “Grades” tab in canvas
- Labs 1-3 are listed with no scores (ignore for now)
- Homeworks are listed as HW1-HW8 in some random order
- MT1 and MT2 are your scores on the midterms (including rescaling in the case of MT2)
- “TOT2” is your current overall score in the course, out of 100
- Ignore the last two columns headed “Assignments” and “Total”. In particular, pay no attention to the stated grade. This is computed automatically by the system but has no relation to your actual grade in this course.
- If there are any discrepancies with what has previously been posted in gradescope, please let me know.